



THE GRANDIN DESIGNER COLLECTION

2,711-3,831 SQFT

2 Story

4-5 Bedrooms

2-5 Baths



Photos, Options,
Virtual Tours
& More

Urban Modern



Coastal Classic



Cambridge Cottage



Western Craftsman

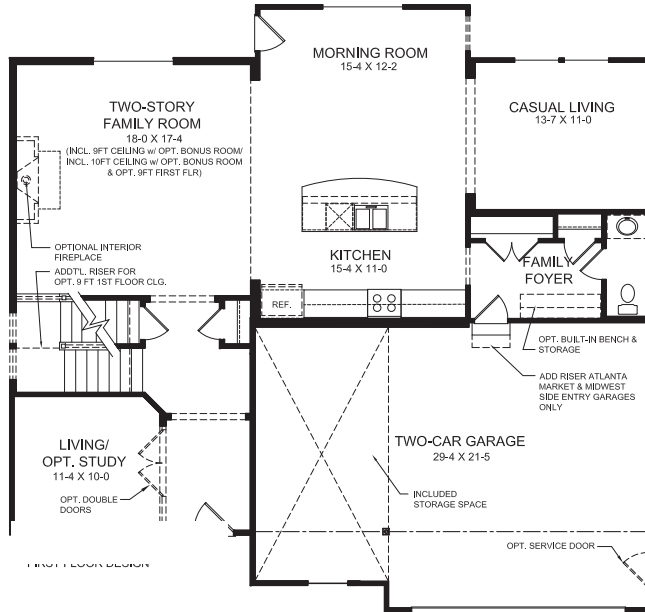
VIEW FLOORPLANS ON FISCHERHOMES.COM



© 2024 Fischer Homes, Inc. Because we are constantly improving our product, we reserve the right to change features, brand names, dimensions, architectural details and designs. This brochure is for illustrative purposes only and not part of a legal contract. Windows, doors, and ceilings may vary on options and elevations selected. Not all features nor options are shown. Please ask our sales counselor for complete information.

RVSD
02/24

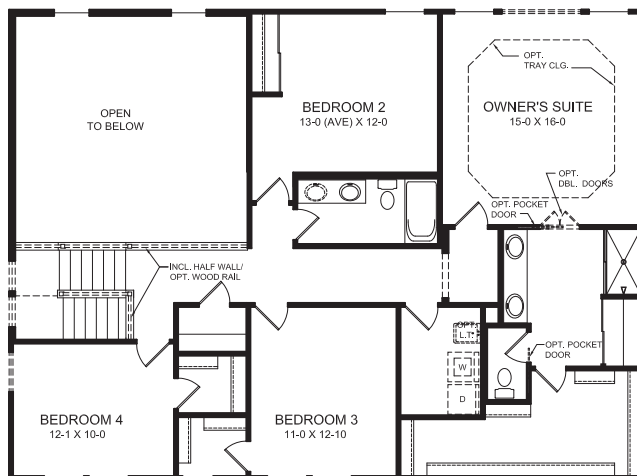
Main Level



Main Level Features

- Soaring Two-story Family Room
- Living Room/Optional Study Located in Front of the Home
- Open Kitchen Design with Expansive Island with Seating and Light-filled Morning Room
- Casual Living Space Open to Kitchen, Family Room and Morning Room located in Rear of the Home
- Optional Private Guest Suite in Lieu of Casual Living Space
- Optional Pocket Office & First Floor Laundry with Walk-in Pantry in Lieu of Casual Living Space
- Spacious Family Foyer with Coat Closet
- Included Over-sized Garage with Large Storage Area
- Optional Built-in Appliances

Upper Level



Upper Level Features

- Spacious Owner's Suite with Optional Tray Ceiling & Large Walk-in Closet
- Optional Owner's Bath with Separate Shower and Garden Tub
- Optional Deluxe Garden Bath with Ceramic Tile Shower & Garden Tub
- 4 Bedrooms
- Optional Expansive Bonus Room in Lieu of Two-Story Family Room
- Convenient 2nd Floor Laundry
- Optional 3rd Full Bath

VIEW FLOORPLANS ON FISCHERHOMES.COM

