



THE AVERY DESIGNER COLLECTION

2,535 SQFT

2 Story

4 Bedrooms

2-4 Baths



Photos, Options,
Virtual Tours
& More

Urban Modern



Coastal Cottage



Modern Farmhouse



Western Craftsman

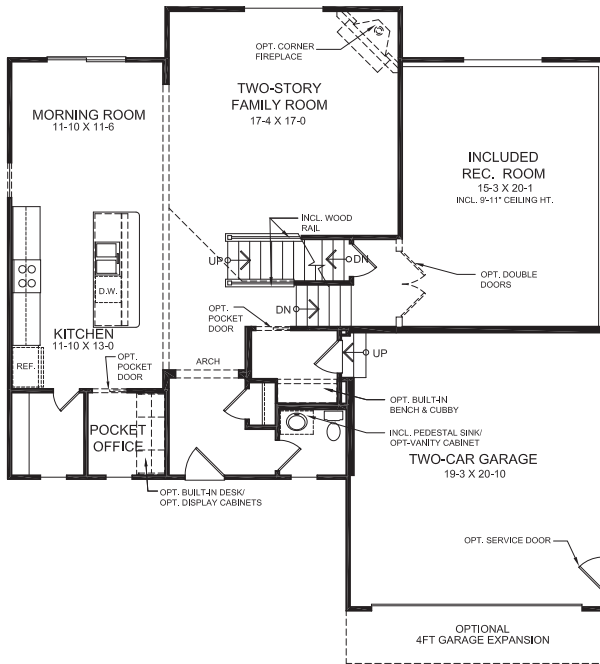
VIEW FLOORPLANS ON FISCHERHOMES.COM



© 2024 Fischer Homes, Inc. Because we are constantly improving our product, we reserve the right to change features, brand names, dimensions, architectural details and designs. This brochure is for illustrative purposes only and not part of a legal contract. Windows, doors, and ceilings may vary on options and elevations selected. Not all features nor options are shown. Please ask our sales counselor for complete information.

RVSD
02/24

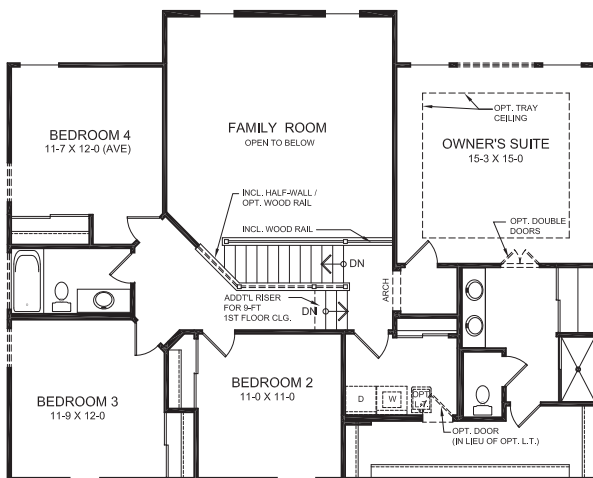
Main Level



Main Level Features

- Unique Five-Level Design
- Included Family Foyer
- Included Pocket Office with Optional Built-in Desk
- Two-story Family Room
- Open Kitchen Design with Large Island
- Walk-in Pantry
- Included Recreation Room just down from the Family Room
- Optional Guest Suite

Upper Level



Upper Level Features

- Owner's Suite Located on it's Own Private Level
- Over-sized Walk-in Closet
- Convenient Optional Door from Owner's Walk-in Closet to Laundry
- Variety of Owner's Level Bath Optional Configurations
- 3 Additional Bedrooms and Full Bath Located on their Own Level
- Upper Level Balcony Provides Dynamic Views into Family Room Below

VIEW FLOORPLANS ON FISCHERHOMES.COM



© 2024 Fischer Homes, Inc. Because we are constantly improving our product, we reserve the right to change features, brand names, dimensions, architectural details and designs. This brochure is for illustrative purposes only and not part of a legal contract. Windows, doors, and ceilings may vary on options and elevations selected. Not all features nor options are shown. Please ask our sales counselor for complete information.

RVSD
02/24