



BRADFORD

Masterpiece Collection

welcome home.

Approximately 2851 sq ft and Up



PACIFIC CRAFTSMAN
(WITH OPTIONAL STONE VENEER
& WOOD TRELLIS WING WALL)

designed by: 



VILLA TOSCANO
(WITH OPTIONAL STONE & BRICK VENEER & STONE WING WALL)

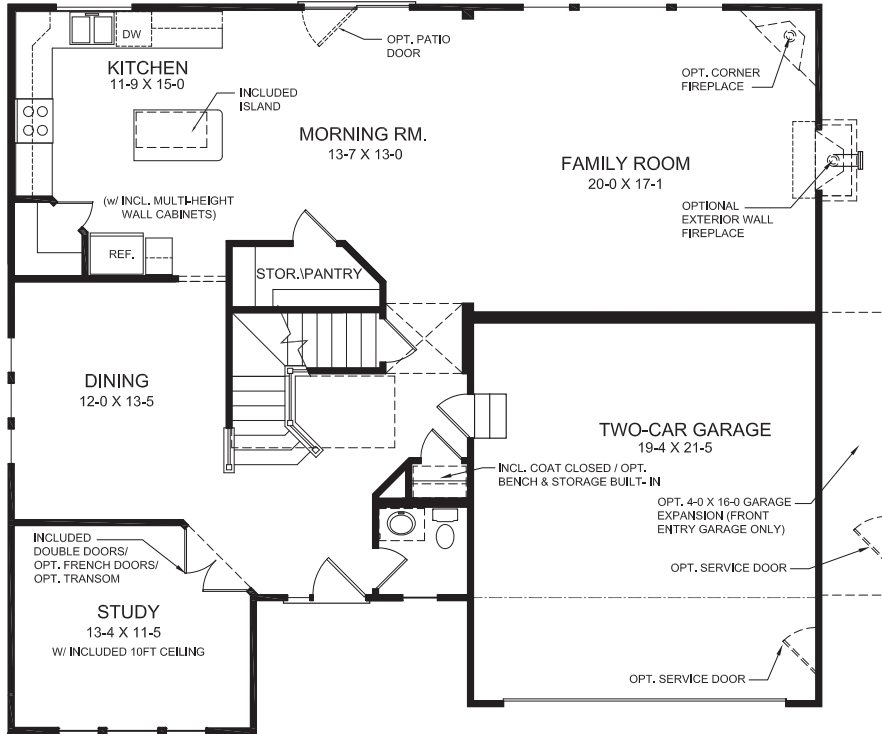
designed by: 

Images & Options Available at fischerhomes.com

Our Plans Include You

welcome home.

Approximately 2851 sq ft and Up

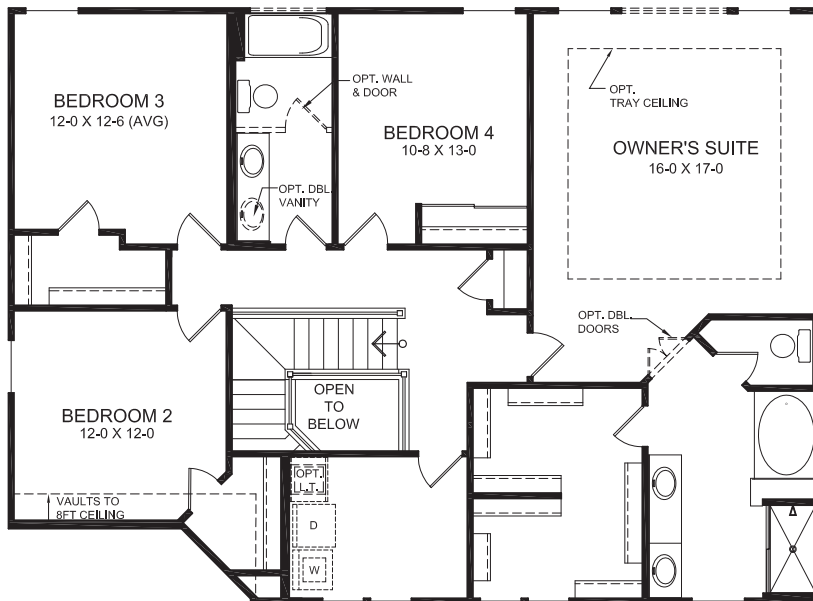


FIRST FLOOR FEATURES

- Spacious Entry Foyer
- Study with Included 10 ft Ceiling Height
- Large Family Room Open to Kitchen/Morning Room
- Kitchen Features Included Island, Optional Furniture Island & Walk-In Pantry
- Alternate First Floor Design with Separate Living/Dining Rooms
- Alternate First Floor Design with Open Kitchen Design & Hearth Room
- Optional First Floor Guest Suite
- Oversized Coat/Storage Closet
- Optional Bay Window in Morning Room

FIRST FLOOR DESIGN

(INCLUDES 9 FT. FIRST FLOOR CEILING HEIGHT)



SECOND FLOOR FEATURES

- Generous Owner's Suite with Included Shower and Garden Tub in Owner's Bath
- Walk-in Closets in all Four Bedrooms
- Optional Divided Hall Bath
- Convenient and Spacious Second Floor Laundry
- Optional Third Bath
- Optional Deluxe Garden Bath with Ceramic Tile Shower
- Optional Designer Bath with Ceramic Tile Shower & Platform Tub

SECOND FLOOR DESIGN

Images & Options Available at fischerhomes.com

Copyright © 2012 Fischer Homes, Inc. "Because we are constantly improving our product, we reserve the right to change features, brand names, dimensions, architectural details and designs. This brochure is for illustrative purposes only and not part of a legal contract. Windows, doors, and ceilings may vary on options and elevations selected. Not all features nor options are shown. Please ask our sales counselor for complete information."

RVSD. 11/23
IM 10/20

Our Plans Include You