



# BAYBERRY

Masterpiece Collection

welcome home.

Approximately 2091 sq ft and Up



**COASTAL CLASSIC**  
(WITH OPTIONAL WOOD TRELLIS WING WALL)

designed by: *FH*



**CAMBRIDGE COTTAGE**  
(WITH OPTIONAL STONE & BRICK  
VENEER & STONE WING WALL)

designed by: *FH*



**FRENCH MANOR**  
(WITH OPTIONAL STONE VENEER  
& STONE WING WALL)

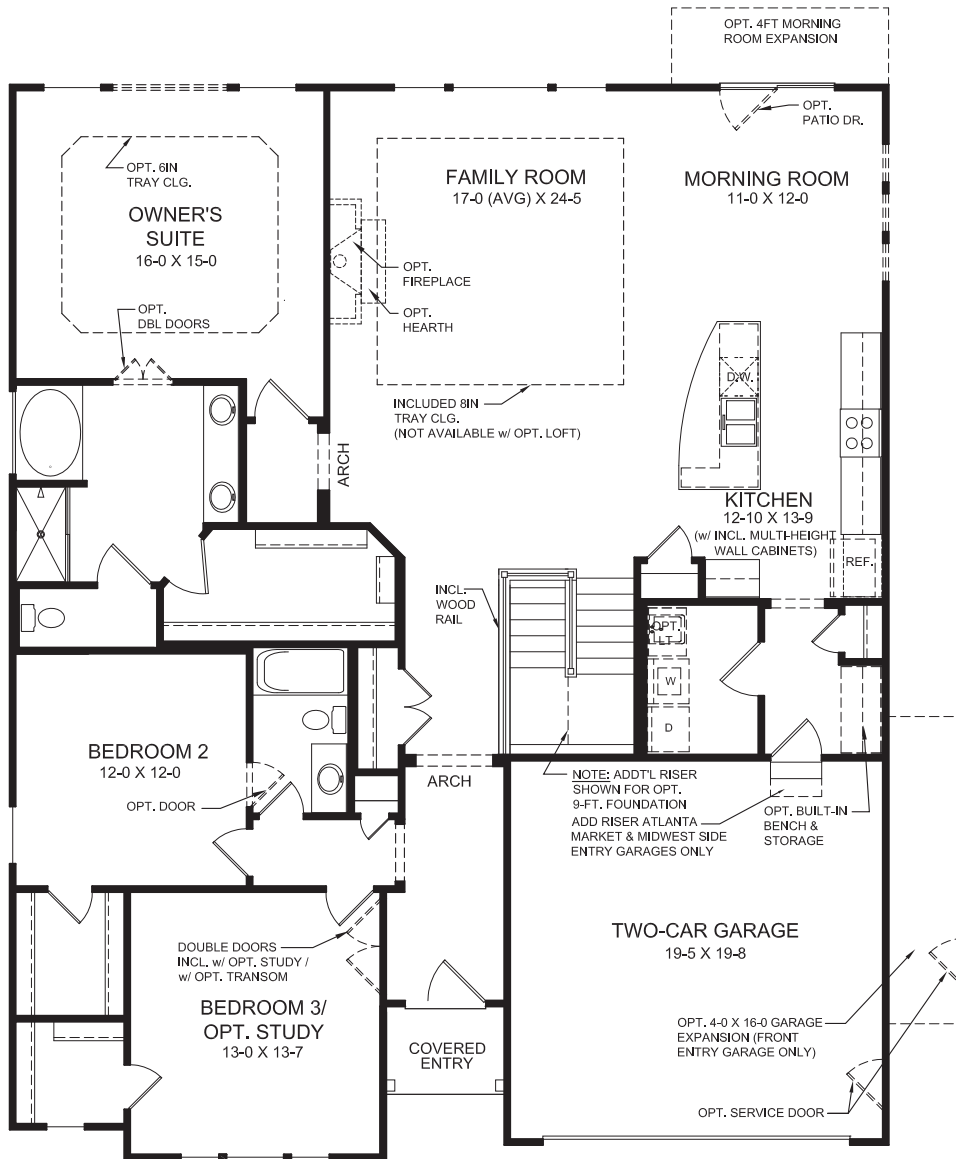
designed by: *FH*

Images & Options Available at [fischerhomes.com](http://fischerhomes.com)

Our Plans Include You

## PLAN FEATURES

- Three Bedroom Home with Optional Study in lieu of Bedroom #3
- Included 9ft First Floor Ceiling Height
- Family Foyer with Optional Built-in Bench & Storage
- Open Kitchen Design with Island Seating and Pantry
- Optional Built-in Appliance Kitchen
- Private Owner's Suite with Owner's Bath and Large Walk-In Closet
- Optional Deluxe Garden Bath with Ceramic Tile Shower and Garden Tub
- Optional Designer Bath with Ceramic Tile & Platform Tub
- Included Double Vanity in Owner's Bath
- Optional Covered Rear Patio/Deck
- Optional 4ft Garage Expansion
- Optional Three Car Garage
- Optional Loft with Optional Bedroom and Full Bath
- Optional Finished Lower Level



## FIRST FLOOR DESIGN

(INCLUDES 9 FT FIRST FLOOR CEILING HEIGHT)

Images & Options Available at [fischerhomes.com](http://fischerhomes.com)



Copyright © 2023 Fischer Homes, Inc. "Because we are constantly improving our product, we reserve the right to change features, brand names, dimensions, architectural details and designs. This brochure is for illustrative purposes only and not part of a legal contract. Windows, doors, and ceilings may vary on options and elevations selected. Not all features nor options are shown. Please ask our sales counselor for complete information."

RVSD. 11/23  
IM 02/21

Our Plans Include You