



ANDOVER

Masterpiece Collection

welcome home.

Approximately 2934 sq ft and Up



WESTERN CRAFTSMAN

(WITH OPTIONAL WOOD TRELLIS WING WALL WITH STONE VENEER BASE)

designed by: 



CASA BELLA

(WITH OPTIONAL BRICK WALL
EXTENSION WITH ARCHED OPENING)

designed by: 



NANTUCKET RETREAT

(WITH OPTIONAL BRICK WING WALL)

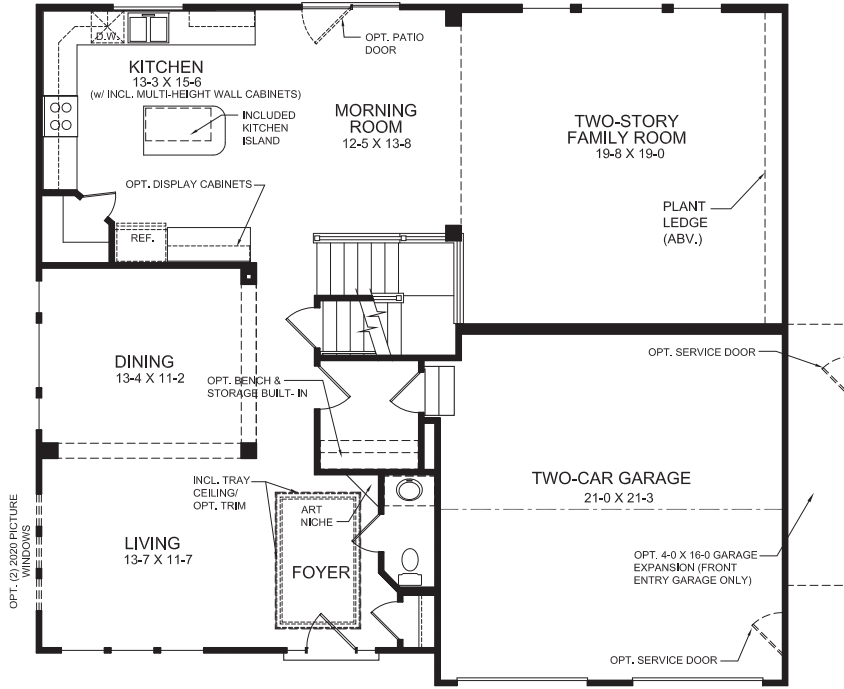
designed by: 

Images & Options Available at fischerhomes.com

Our Plans Include You

welcome home.

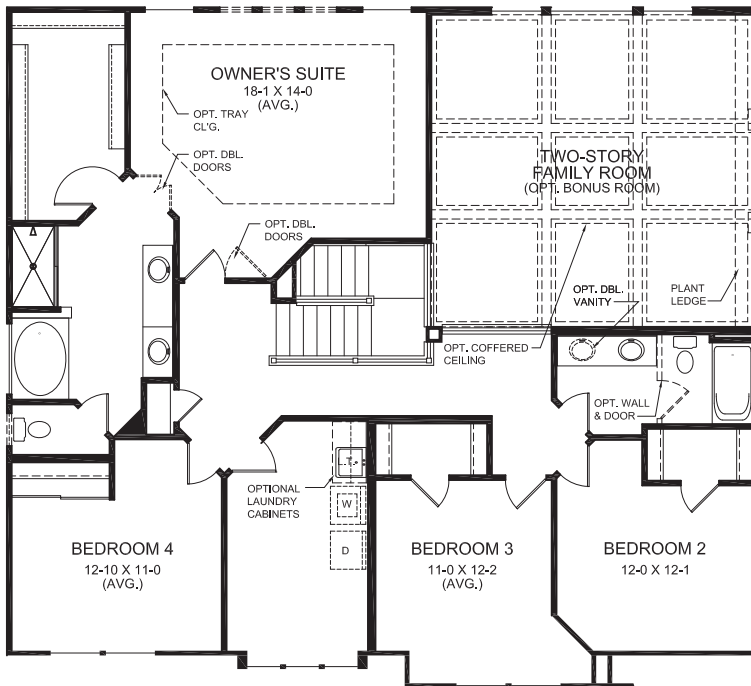
Approximately 2934 sq ft and Up



FIRST FLOOR DESIGN
(INCLUDES 9 FT FIRST FLOOR CEILING HEIGHT)

FIRST FLOOR FEATURES

- Open Living/Dining Rooms with Optional Study in lieu of Living Room
- Open Kitchen & Morning Room with Large Corner Pantry and Included Island
- Optional Furniture Island
- Large Two-Story Family Room
- Optional Fireplace
- Included Family Foyer
- Optional Bay Window
- Alternate First Floor Design with Sunroom & Gourmet Kitchen Island
- Optional Coffered Ceiling in Family Room



SECOND FLOOR DESIGN

SECOND FLOOR FEATURES

- Generous Owner's Suite with Included Shower and Garden Tub in the Owner's Bath
- 4 Bedrooms
- Dynamic Views into Family Room and Foyer from Second Floor Balconies
- Included Second Floor Laundry
- Optional Bonus Room or Guest Suite in lieu of Two-Story Family Room
- Optional Divided Hall Bath
- Optional Third Full Bath